

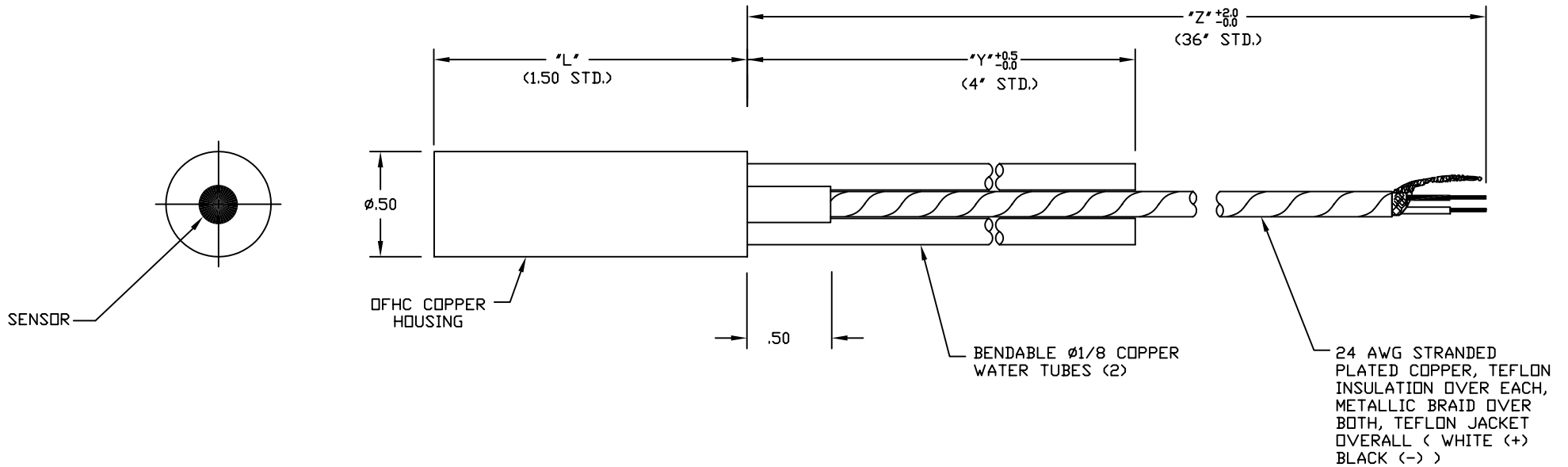


有限会社テクノオフィス

〒225-0011

神奈川県横浜市青葉区あざみ野3-20-8

TEL.045-901-9861 FAX.045-901-9522



NOTES:

1. P/N: 32-XX-L-Y-Z-21070F is a water cooled total (convective plus radiant) heat flux transducer which provides a linear EMF output directly proportional to the net absorbed heat transfer rate to the sensing tip. The standard nominal output is 10 millivolts at the design heat flux level "XX" in Btu/ft²sec. Each unit is supplied with an individual calibration traceable to the National Institute of Standards and Technology.

2. Standard ranges: 0.2, 0.5, 1, 2, 5, 10, 15, 20, 25, 30, 40, 50, 100, 150, 200, 250, 300, 500, 1000, 1500, 2000, 2500 Btu/ft²sec

3. Standard sensor is Schmidt-Boelter thermopile for design heat flux range up to 2 Btu/ft²sec and Gardon gage at 5 Btu/ft²sec and above. Sensor coated with optical black.

4. Specify the desired housing length (L), tube length (Y), and leadwire length (Z) by specifying the desired lengths, in inches, in the P/N.

5. Lead wire is 24 AWG stranded copper with Teflon insulation over each wire, Teflon jacket overall. (White wire positive, Black wire negative).

UNLESS OTHERWISE SPECIFIED DIMENSIONS ARE IN INCHES TOLERANCES		HEAT FLUX TRANSDUCER		MEDTHERM CORPORATION	
FRACTIONS ± 1/32	DECIMALS 2PL ± .01 3PL ± .005				
MATERIAL NOTED		P/N: 32-XX-L-Y-Z-21070F		POST OFFICE BOX 412 HUNTSVILLE, ALABAMA 35804	
FINISH		SCALE:	REV E: 6/13/07	DWG SIZE	REV
		ORIG. DWG 6/ 7/85	CHK.	B	21070 F
		CAD DWG 12/ 31/92	APP. <i>DSB</i>	SHEET	OF
		DR. <i>GM</i>			